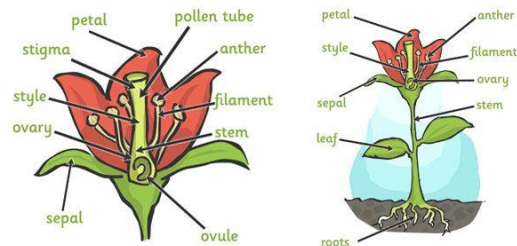


Important Questions

1	What are the different parts of a flowering plant?	
2	What are the functions of the different parts of a flowering plant?	
3	What do plants need to grow?	
4	How is water transported in plants?	
5	What is pollination?	
6	How are seeds formed?	
7	How are seeds dispersed?	



Key Knowledge

1	To identify the different parts of flowering plants	
2	To be able to describe the functions of different parts of flowering plants	
3	To explore the requirements of plants for life and growth and how they vary from plant to plant	
4	To understand the way in which water is transported in plants	
5	To understand the process of pollination and the importance of bees in this role	
6	To explain how seeds are formed	
7	To discuss the different ways that seeds can be dispersed	

Key Skills

1	Ask relevant questions about the effect of different factors on plant growth	
2	Make use of careful observations to discover what plants need to grow	
3	Use oral and written explanations to report on findings e.g. water transportation	
4	Set up a practical enquiry to discover the effect different factors have on plant growth	
5	Make use of drawings, labelled diagrams, bar charts and tables	

Vocabulary

1	Flowers	The part of a plant to attract insects and where the seeds are formed	
2	Formation	How something is created	
3	Leaves	The part of the plant where food is produced	
4	Nutrients	These are necessary for the plant to make energy, grow, develop and reproduce	
5	Photosynthesis	The process by which the leaves turn sunlight into food	
6	Pollination	The process by which the pollen is transferred from one flower to another to another	
7	Roots	The part of the plant that secures it in the ground and takes in water from the earth.	
8	Seed dispersal	How seeds are transferred from the plant to reproduce	
9	Stem/Trunk	The part of the plant that transports water and holds the plant upright	
10	Transport	How something travels from one place to another	